

# State of Wyoming Corner Record

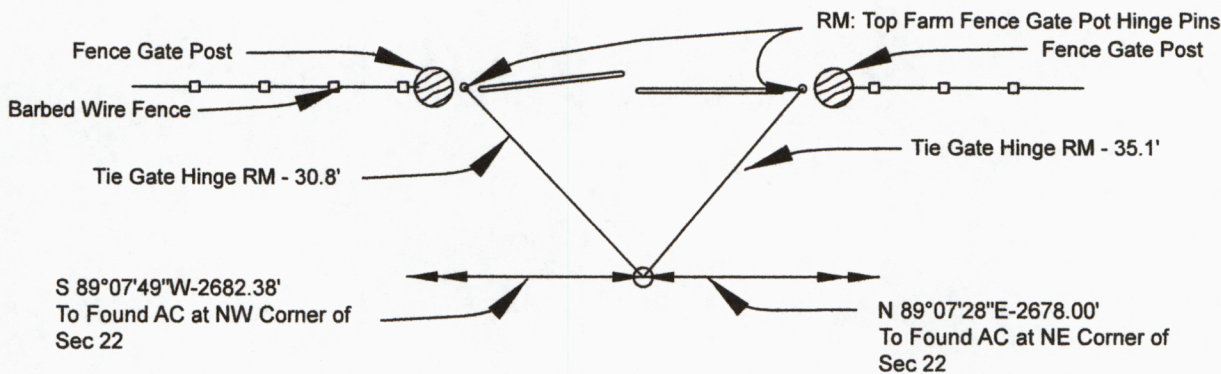
(In compliance with the *CORNER PERPETUATION AND FILING ACT*, Wyoming Statutes, 1997, Section 33-29-140, et seq., and the Rules and Regulations of the Board of Registration for Professional Engineers and Professional Land Surveyors)

Reverse side of this form may be used if more space is needed.

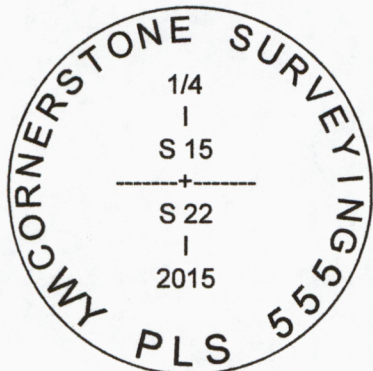
Record of original survey and citation of source of historical information (if corner is lost or obliterated). Description of corner monumentation evidence found and/or monument and accessories established to perpetuate the location of this corner. Sketch of relative location of monument, accessories, and reference points with course and distance to adjacent corner(s) (if determined in this survey). Method and rationale for reestablishment of lost or obliterated corner.

Found: Broken rebar at distances shown in diagram below and at location described in a 1990 Corner Recordation form by PLS 2500

Set: 3 1/4" Aluminum Cap on found rebar to perpetuate the monument at the 1/4 Corner common to Sections 15 and 22.



## MONUMENT LOCATION



## MONUMENT STAMPING

## PHOTO OF FOUND MONUMENT

Date of Field Work: July 24, 2015 Office Reference: 2015-5 Rohrbouck

### CROSS INDEX DIAGRAM

A	1	2	3	4	5	6	7	8	9	10	11	12	13	14	15	16	17	18	19	20	21	22	23	24	25	A
B																										B
C	6																									C
D		5																								D
E																										E
F																										F
G	7																									G
H		8																								H
J																										J
K																										K
L	18																									L
M		17																								M
N																										N
O																										O
P	19																									P
Q		20																								Q
R																										R
S																										S
T	30																									T
U		29																								U
V																										V
W																										W
X	31																									X
Y		32																								Y
Z																										Z
	1	2	3	4	5	6	7	8	9	10	11	12	13	14	15	16	17	18	19	20	21	22	23	24	25	

Land Surveyor / Firm / Address  
S. D. Dawson  
Cornerstone Surveying Company  
4005 Snyder Avenue  
Cheyenne, Wyoming 82001  
 Telephone: 307-421-9932

This corner record was prepared by me or under my direction and supervision.  
 SEAL & SIGNATURE



Corner Name: Quarter Corner Section: 15 / 22 T 12 N R 63W ; 6th P.M. Cross-Index No.: N-15  
 SBRPEPLS/PLSW: March 1994; PLSW January 1998



RECP #: 670109  
 RECORDED 9/22/2015 AT 1:48 PM BK# 2465 PG# 121  
 Debra K. Lathrop, CLERK OF LARAMIE COUNTY, WY PAGE 1 OF 1